



FEATURES:

- ***UP TO 50% SAVINGS IN INSTALLED COST***
- ***COMPETITIVELY PRICED WITH EMT***
- ***UL LISTED, CSA CERTIFIED***
- ***NONCONDUCTIVE***
- ***CORROSION RESISTANT***
- ***HAND BENDABLE***
- ***LIGHTWEIGHT***

FLEX-PLUS[®] BLUE[™] ENT

**ONE PIECE QUICK CONNECT
COUPLING & TERMINATORS**

TRANSITION ADAPTERS

OUTLET & SWITCH BOXES

**PLASTER/MUD RING
EXTENDERS**

**OCTAGON CEILING BOXES
& COVERS**

CABLE TIE KADDY

CONDUIT CUTTERS

CEMENT

WIRE HANDLING PRODUCTS

1. Lamson Home Products reserves the right to round orders to the nearest package quantity.
2. Prices subject to change without notice.
3. Shaded items indicate non-stock factory make-to-order items only – material is non-returnable and non-cancellable.

Electrical Nonmetallic Tubing – Coils

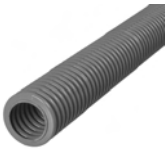
Standard Carlon® Blue™* – Recommended for Power Conductors



Part #	Product Size	UPC Code	Package Quantity	Package Dimensions (L x W x H)	Case Weight (Lbs)	Package (Cu. Ft.)
12005-200	1/2"	0 34481 23167 7	200'	24.5" x 24.5" x 6.5"	19.9	2.25
12007-100	3/4"	0 34481 23183 7	100'	23" x 23" x 6.5"	13.5	1.98
12008-100	1"	0 34481 23198 1	100'	23" x 23" x 9"	19.0	2.75

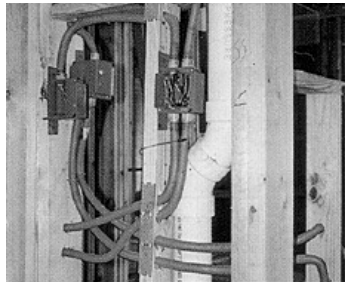
Electrical Nonmetallic Tubing – 10 ft. Lengths

Standard Carlon® Blue™* – Recommended for Power Conductors



Part #	Product Size	UPC Code	Package Quantity	Package Dimensions (L x W x H)	Case Weight (Lbs)	Package (Cu. Ft.)
12005-UPC	1/2"	0 34481 02483 5	200'	120" x 5" x 4.87"	21.6	1.69
12007-UPC	3/4"	0 34481 23182 0	100'	120" x 4.5" x 3"	13.9	0.94
12008-010	1"	0 34481 23197 4	100'	120" x 4.75" x 5.5"	19.1	1.81

*The solid blue color of ENT conduit used for power conductors is a registered trademark of Carlon.



Electrical Nonmetallic Tubing – Reels

Standard Carlon® Blue™* – Recommended for Power Conductors



Part #	Product Size	UPC Code	Reel Length	O.D.	Reel Weight (Lbs)	Weight per 100 (Ft.)
12005AK-001	1/2"	0 34481 23170 7	1500'	0.840	193.5	12.9
12007AA-001	3/4"	0 34481 23186 8	1000'	1.050	176.0	17.6
12008-750	1"	0 34481 23201 8	750'	1.315	143.3	19.1
12009-750	1-1/4"	0 34481 00280 2	750'	1.660	138.0	18.4
12010-750	1-1/2"	0 34481 00293 2	750'	1.900	294.0	39.2
12011-500	2"	0 34481 00283 3	750'	2.375	158.0	31.6

Listed for use with 90°C Conductors

*The solid blue color of ENT conduit used for power conductors is a registered trademark of Carlon.

Yellow** – Recommended for Communications Conductors

Part #	Product Size	UPC Code	Reel Length	O.D.	Reel Weight (Lbs)	Weight per 100 (Ft.)
1205AKY-001	1/2"	0 34481 23223 0	1500'	0.840	154.5	10.3
1207AAY-001	3/4"	0 34481 00246 8	1000'	1.050	136.0	13.6
12008Y-750	1"	0 34481 23211 7	750'	1.315	143.3	19.1

Red** – Recommended for Fire Protective Signaling Conductors

Part #	Product Size	UPC Code	Reel Length	O.D.	Reel Weight (Lbs)	Weight per 100 (Ft.)
1205AKR-001	1/2"	0 34481 23222 3	1500'	0.840	154.5	10.3
1207AAR-001	3/4"	0 34481 23225 4	1000'	1.050	136.0	13.6
12008R-750	1"	0 34481 23209 4	750'	1.315	143.3	19.1

**All fittings and boxes are standard Carlon® Blue. The development of red and yellow tubing was accomplished at the request of engineers desiring color coded conduits to identify fire protective signaling conductors and communication conductors on the job for safety purposes. Blue™ ENT continues to indicate to the trade, as it always has, a conduit for power conductors made solely by Carlon.

ENT may show color deterioration in direct sunlight over an extended period of time. It is suggested that all ENT products not be stored outside. Since this product is not intended for use outdoors, it should not be exposed to extended periods of direct sunlight.

Shaded area indicates non-stock factory make-to-order items only – material is non-returnable and non-cancellable.

One Piece Quick Connect Coupling



Part #	Product Size	UPC Code	Carton Quantity	Carton Dimensions (L x W x H)	Case Weight (Lbs)	Case Cube (Cu. Ft.)
A240D-CAR	1/2"	0 34481 00851 4	25	6" x 4" x 6"	0.75	0.08
A240E-CAR	3/4"	0 34481 00852 1	25	6" x 4" x 6"	0.83	0.08

One Piece Quick Connect Threaded Male Adapters



Part #	Product Size	UPC Code	Carton Quantity	Carton Dimensions (L x W x H)	Case Weight (Lbs)	Case Cube (Cu. Ft.)
A243D-CAR	1/2"	0 34481 00857 6	25	6" x 4" x 6"	0.50	0.08
A243E-CAR	3/4"	0 34481 00858 3	25	6" x 4" x 6"	0.50	0.08

One Piece Quick Connect Snap-In Terminator Adapters



Part #	Product Size	UPC Code	Carton Quantity	Carton Dimensions (L x W x H)	Case Weight (Lbs)	Case Cube (Cu. Ft.)
A253D-CAR	1/2"	0 34481 00860 6	25	6" x 4" x 6"	1.21	0.08
A253E-CAR	3/4"	0 34481 00861 3	25	6" x 4" x 6"	0.83	0.08

Carlton one piece ENT Quick Connect Couplings, Threaded Adapters and Snap-In Terminator Adapters are suitable for damp locations. Quick Connect Couplings and Threaded Adapters are concrete-tight when used with Carlton ENT.

All Schedule 40 fittings are compatible with ENT when using ENT cement.

Use of ENT Blue Quick-Set Cement is required. See page 77 for details.

Transition Adapters

Male ENT to Schedule 40 & 80 PVC Conduit



Part #	Product Size	UPC Code	Carton Quantity	Carton Dimensions (L x W x H)	Case Weight (Lbs)	Case Cube (Cu. Ft.)
A263D-CAR	1/2" ENT to 1/2" Sch. 40	0 34481 18379 2	25	6" x 3" x 6"	0.68	0.062
A263E-CAR	3/4" ENT to 3/4" Sch. 40	0 34481 18380 8	15	6" x 3" x 6"	0.60	0.062

ENT to EMT



Part #	Product Size	UPC Code	Carton Quantity	Carton Dimensions (L x W x H)	Case Weight (Lbs)	Case Cube (Cu. Ft.)
A245D-CAR	1/2" ENT to 1/2" EMT	0 34481 18384 6	15	6" x 3" x 6"	0.59	0.062
A245E-CAR	3/4" ENT to 3/4" EMT	0 34481 18385 3	15	6" x 3" x 6"	0.063	0.062

Reducer



Part #	Product Size	UPC Code	Carton Quantity	Carton Dimensions (L x W x H)	Case Weight (Lbs)	Case Cube (Cu. Ft.)
A273DE-CAR	3/4" to 1/2"	0 34481 18887 2	15	6" x 3" x 6"	0.063	0.062

Outlet and Switch Boxes

Single Gang – 16 Cu. In.



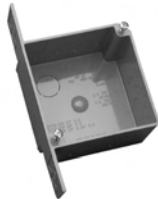
Part #	Product Size	UPC Code	Carton Quantity	Carton Dimensions (L x W x H)	Case Weight (Lbs)	Case Cube (Cu. Ft.)
A58381D-CAR	3" x 2-1/4" x 3" (1/2" KO's)	0 34481 07435 9	25	18" x 12" x 6"	4.60	0.75
A58381E-CAR	3" x 2-1/4" x 3" (3/4" KO's)	0 34481 07440 3	15	12" x 12" x 6"	2.76	0.50

Two Gang – 20 Cu. In.



Part #	Product Size	UPC Code	Carton Quantity	Carton Dimensions (L x W x H)	Case Weight (Lbs)	Case Cube (Cu. Ft.)
A5215DR-CAR	4" x 4" x 1-1/2" (1/2" KO's)	0 34481 07400 7	15	12" x 12" x 6"	3.30	0.50
A5215ER-CAR	4" x 4" x 1-1/2" (3/4" KO's)	0 34481 07405 2	15	12" x 12" x 6"	3.70	0.50
A521DE-CAR	4" x 4" x 1-1/2" (1/2" & 3/4" KO's)	0 34481 07415 1	15	12" x 12" x 6"	3.30	0.50

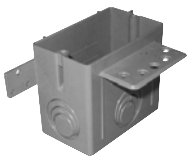
Two Gang – 30.3 Cu. In.



Part #	Product Size	UPC Code	Carton Quantity	Carton Dimensions (L x W x H)	Case Weight (Lbs)	Case Cube (Cu. Ft.)
A5217DE-CAR	4" x 4" x 2-3/8" (1/2" & 3/4" KO's)	0 34481 19832 1	10	12" x 12" x 6"	7.60	0.50

Outlet and Switch Boxes – Eccentric Knockouts

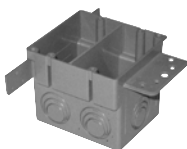
Single Gang – 22 Cu. In.



Part #	Product Size	UPC Code	Carton Quantity	Carton Dimensions (L x W x H)	Case Weight (Lbs)	Case Cube (Cu. Ft.)
A122-CAR	Single Gang	0 34481 18414 0	12	20" x 6" x 6.5"	3.18	0.45

1/2", 3/4", 1" Knockouts.

Combination Two Gang/Four Square Box – 38 Cu. In.



Part #	Product Size	UPC Code	Carton Quantity	Carton Dimensions (L x W x H)	Case Weight (Lbs)	Case Cube (Cu. Ft.)
A238-CAR	Two Gang	0 34481 18414 0	12	20" x 6" x 6.5"	3.18	0.45

1/2", 3/4", 1" Knockouts.

Single Gang 4" Square Plaster/Mud Rings



Part #	Product Size	UPC Code	Carton Quantity	Carton Dimensions (L x W x H)	Case Weight (Lbs)	Case Cube (Cu. Ft.)
A400R-CAR	Blank	0 34481 10100 0	25	6" x 4" x 6"	2.14	0.08
A410R-CAR	1/2" Rise	0 34481 10101 7	20	12" x 4" x 6"	1.90	0.17
A411RR	5/8" Rise	0 34481 10131 4	6	6" x 4" x 6"	0.65	0.08
A413R-CAR	1" Rise	0 34481 10133 8	10	12" x 4" x 6"	1.40	0.17
A414R-CAR	1-1/4" Rise	0 34481 10134 5	8	12" x 4" x 6"	1.30	0.17

Two Gang 4" Square Plaster/Mud Rings



Part #	Product Size	UPC Code	Carton Quantity	Carton Dimensions (L x W x H)	Case Weight (Lbs)	Case Cube (Cu. Ft.)
A420RR	1/2" Rise	0 34481 10102 4	6	6" x 4" x 6"	0.52	0.08
A421RR	5/8" Rise	0 34481 10141 3	6	6" x 4" x 6"	0.52	0.08
A422-CAR	3/4" Rise	0 34481 10142 0	50	11.5" x 7.6" x 11"	4.80	0.56

*Quick Connect 4" Octagon Ceiling Boxes
(In Carlton Blue)*

Carlton ceiling boxes and round plaster rings are produced from a special high heat resistant engineered plastic material developed specifically for fixture support.

*Ceiling Box
20.5 cu. in.*



Part #	Product Size	UPC Code	Carton Quantity	Carton Dimensions (L x W x H)	Case Weight (Lbs)	Case Cube (Cu. Ft.)
A615D	4" (1/2" KO's)	0 34481 07450 2	50	16" x 12" x 11"	6.40	1.22
A615E	4" (3/4" KO's)	0 34481 07455 7	50	16" x 12" x 11"	6.40	1.22
A615DE	2-1/2" Deep (3/4" KO's)	0 34481 07460 1	50	12" x 12" x 6"	6.40	0.27
A615DEL	4", L Bracket (1/2"-3/4" KO's)	0 34481 19469 9	8	20" x 4" x 6"	2.38	0.27
A615DJ	4", J Bracket (1/2" KO's)	0 34481 07465 6	50	24" x 16" x 12"	18.70	2.67
A615DL	4", L Bracket (1/2" KO's)	0 34481 07470 0	50	24" x 16" x 12"	12.90	2.67
A615DH	4", w/Hanger (1/2" KO's)	0 34481 07475 5	50	16" x 12" x 11"	13.60	1.22

Note: Listed for fixture support up to 50 lbs.
Adjust from 14-1/4" to 23-1/4".

**Ceiling Box with J Mount
20.5 cu. in.**



**Ceiling Box with L Bracket
20.5 cu. in.**



**Ceiling Box with Adjustable
Hanger Bar 20.5 cu. in.**





Cover with 1/2"

Part #	Product Size	UPC Code	Carton Quantity	Carton Dimensions (L x W x H)	Case Weight (Lbs)	Case Cube (Cu. Ft.)
A470DR-CAR	Blank (1/2" KO)	0 34481 13133 5	25	6" x 4" x 6"	0.65	0.08
A471RR	1/2"	0 34481 10152 9	8	6" x 4" x 6"	0.39	0.08
E460R-CAR	Blank	0 34481 05210 4	35	12" x 4" x 6"	2.20	0.17

Note: Listed for fixture support up to 50 lbs.

Cable Tie Kaddy



Part #	Product Size	UPC Code	Carton Quantity	Carton Dimensions (L x W x H)	Case Weight (Lbs)	Case Cube (Cu. Ft.)
TK715	N/A	0 34481 18978 7	6	14.75" x 6.75" x 6.75"	2.25	0.38

Conduit Cutters



Part #	Product Size	UPC Code	Carton Quantity	Carton Dimensions (L x W x H)	Case Weight (Lbs)	Case Cube (Cu. Ft.)
CC120B	Small 1/2"-1"	0 34481 10344 8	10	6" x 4" x 6"	2.76	0.08

For fast, smooth field cuts of 1/2" through 1" Schedule 40 and 80 rigid nonmetallic conduit, Flex-Plus® Blue® ENT, and Carflex® Liquidtight Flexible Nonmetallic Conduit.

Tool length 8".



Part #	Product Size	UPC Code	Carton Quantity	Carton Dimensions (L x W x H)	Case Weight (Lbs)	Case Cube (Cu. Ft.)
CC125	Medium 1/2"-1-1/4"	0 34481 10345 5	12	11.6" x 7.7" x 11.5"	10.07	0.59

For fast, smooth field cuts of 1/2" through 1-1/4" Schedule 40 and 80 rigid nonmetallic conduit, Flex-Plus® Blue® ENT, and Carflex® Liquidtight Flexible Nonmetallic Conduit.

Tool length 9".

Cement for Nonmetallic Conduit, Fittings and Accessories

Regular Grade Grey Solvent Cement



Part #	Product Size	UPC Code	Carton Quantity	Carton Dimensions (L x W x H)	Case Weight (Lbs)	Case Cube (Cu. Ft.)
VC9923	16 oz.	0 34481 06970 6	24	13.7" x 10.5" x 9.5"	28.86	0.79
VC9922	32 oz.	0 34481 06971 3	12	17.5" x 13.2" x 5.7"	27.46	0.77
VC9924-24	8 oz.	0 34481 06969 0	24	11" x 8.5" x 8.25"	15.12	N/A

Low VOC (Volatil Organic Compounds Grey Solvent Cement



Part #	Product Size	UPC Code	Carton Quantity	Carton Dimensions (L x W x H)	Case Weight (Lbs)	Case Cube (Cu. Ft.)
VC9LV4	8 oz.	0 34481 06660 6	10	9.5" x 8.37" x 4.25"	6.70	0.19
VC9LV3	16 oz.	0 34481 07143 3	24	13.75" x 10.5" x 9.5"	26.45	0.79
VC9LV2	32 oz.	0 34481 08757 1	12	13" x 17.3" x 6.3"	26.13	0.82
VC9LV4-24	8 oz.	0 34481 06660 6	24	11" x 8.5" x 8.25"	15.12	N/A

LHP reserves the right to round orders to the nearest package quantity.

Quick-Set Cement



Part #	Product Size	UPC Code	Carton Quantity	Carton Dimensions (L x W x H)	Case Weight (Lbs)	Case Cube (Cu. Ft.)
VC9984	8 oz.	0 34481 06974 4	10	9.5" x 8.37" x 4.25"	6.68	0.19
VC9983	16 oz.	0 34481 06976 8	24	13.7" x 10.5" x 9.5"	30.02	0.79
VC9982	32 oz.	0 34481 06977 5	12	17.5" x 13.2" x 5.7"	28.69	0.77

PVC Cement, Rubber Thread Sealer, and WeatherGuard

PVC Cement



Part #	Product Size	UPC Code	Carton Quantity	Carton Dimensions (L x W x H)	Case Weight (Lbs)	Case Cube (Cu. Ft.)
VC9AC5	4 oz.	0 34481 19510 8	12	9.125" x 6.875" x 6.375"	5.55	0.23

PVC Cement, Rubber Thread Sealer, and WeatherGuard (Continued)

Rubber Thread Sealer



Part #	Product Size	UPC Code	Carton Quantity	Carton Dimensions (L x W x H)	Case Weight (Lbs)	Case Cube (Cu. Ft.)
VC9TS5	4 oz.	0 34481 19511 5	12	9.125" x 6.875" x 6.375"	5.55	0.23

WeatherGuard



Part #	Product Size	UPC Code	Carton Quantity	Carton Dimensions (L x W x H)	Case Weight (Lbs)	Case Cube (Cu. Ft.)
VC9WG5	4 oz.	0 34481 19512 2	12	9.125" x 6.875" x 6.375"	5.55	0.23

Wire Handling Products

Hand Kaddy for Spooled Wire



Part #	Product Size	UPC Code	Carton Quantity	Carton Dimensions (L x W x H)	Case Weight (Lbs)	Case Cube (Cu. Ft.)
WK7001	N/A	0 34481 18655 7	4	23.75" x 16" x 10.75"	27.25	2.36

Cable Dispenser Floor/Stud Mount



Part #	Product Size	UPC Code	Carton Quantity	Carton Dimensions (L x W x H)	Case Weight (Lbs)	Case Cube (Cu. Ft.)
WK7203	N/A	0 34481 18657 1	3	21" x 13" x 18"	46.69	2.84

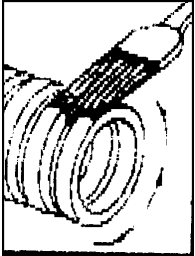
Wire Kart for Spooled Wire



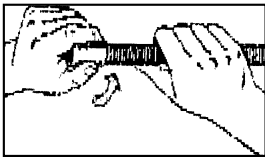
Part #	Product Size	UPC Code	Carton Quantity	Carton Dimensions (L x W x H)	Case Weight (Lbs)	Case Cube (Cu. Ft.)
WK7101	N/A	0 34481 18656 4	2	46.5" x 12.75" x 7.25"	46.77	2.48

Carlton® Quick Connect

Carlton new quick connect one piece fittings are approved for concrete-tight installations. For sizes larger than 1" the use of standard Carlton® solvent weld fittings with the proper ENT cement is recommended.



1. Cut ENT square end cleanly.
2. Insert end into fitting, making sure two (2) full corrugations are snapped into fitting beyond flexible tabs (2 clicks).
3. ENT should be tied to rebar at 2-3 foot intervals to prevent flotation. Keep ENT straight. Small deflections over a long run may accumulate significant degrees of bend which will affect conductor installation. Suitable materials include wire, tie wraps, and tape.
4. When using UL solvent weld fittings for concrete tight performance:



- A. Do not use chemical primer or cleaner.
- B. Apply a light, uniform coat of cement labeled for use with ENT on the coupling and ENT.
- C. Do not use a dauber.
- D. Brush excess cement out of ENT grooves.
- E. Promptly insert ENT into fitting while cement is wet, until the stop is reached, and give a quarter turn.
- F. Do not disturb until joint is set.

Electrical Nonmetallic Tubing (ENT)

- 1.1 Electrical Nonmetallic Tubing (ENT), is designed to replace EMT, flexible metal conduit or other raceway or cable systems, for installation in accordance with Article 362 of the National Electrical Code, other applicable sections of the Code, and local codes.
- 1.2 Any ENT used shall meet the requirements of UL Standard UL 1653 and shall be listed by Underwriters Laboratories, Inc., as suitable for its intended purpose.
- 1.3 ENT shall be recognized by a The National Evaluation Service, Inc. for use in fire resistive construction.
- 1.4 Penetration of fire rated walls, floors or ceilings shall use classified Through-Penetration Firestop Systems described in the current Underwriters Laboratories Fire Resistance Directory.
- 1.5 Fittings and outlet boxes shall be designed for use with ENT and listed by Underwriters Laboratories. All fittings, boxes and accessories shall be manufactured by CARLON.
- 1.6 Only Carlton ENT Blue cement recommended specifically for use with ENT and PVC Schedule 40 fittings shall be used.
- 1.7 Unless indicated differently on drawings, ENT systems shall be color coded: BLUE, YELLOW, or RED. ENT can be used for identification.

Electrical Nonmetallic Tubing (Continued)

FEATURES:

- UL Listed, Trade Sizes (1/2" to 2')
- UL recognizes the use of PVC Schedule 40 cement type fittings with all sizes of ENT
- ENT ambient temperature range -4°F (installation) to 122°F
- ENT rated for 90°C conductors
- One piece ENT Coupling, Threaded Terminator and Schedule 40 Transition Fitting are rated concrete tight without tape by UL Recognized in current NEC ref. Article 362
- Recognized for use in 2-hour fire resistive nonload bearing and load bearing wall assemblies per NER-290 and ER-5644
- Recognized for use in 1-hour fire resistive nonload bearing wall assemblies per NER-290 and ER-5644
- Recognized for use in a fire resistive ceiling assembly (up to 3 hours) per NER-290 and ER-5644
- Recognized for Through-Penetration Firestop systems as classified by UL to meet BOCA, SBCCI and ICBO codes.
- Nonconductive /noncorrosive pliable raceway system
- Packaged in sticks, coils and reels
- Available in three colors: Blue, Yellow and Red for color coding
- Complete line of fittings & accessories specifically designed for use with ENT
- Hand bendable - does not require special tools*
- Easy to cut length needed for installation - reduces scrap*
- Conductors easily push through the raceway (up to approximately 50 feet)*
- Lightweight makes it easy to handle on the job*

*Speed of installation keeps the job on schedule despite unexpected obstacles. Lower installation costs allow for savings to be reallocated to upgrade other areas, such as; lighting, dimming, etc.

APPROVED USES:

- Concrete slab ref. current NEC Article 362
- Walls - wood stud, masonry and metal stud ref. current NEC Article 362
- Ceilings - permanent or dropped (free air only) ref. current NEC Article 362
- Exposed - buildings not in excess of 3 stories ref. current NEC Article 362
- Public Assembly ref. current NEC Section 518-4, in nonfire rated and certain five rated structures
- Prewired, current NEC Article 362
- Classified by UL 1479 for Through Penetration Firestop Systems in UL Guide Category XHEZ and current UL Fire Resistance Directory
- Three hour rated floor/ceiling assemble

TYPICAL APPLICATIONS:

- Residential: Low or high rise - multi or single family
- Commercial: Low or high rise - office, shopping malls, retail, hotel/motel, restaurant, etc.
- Nursing Homes/Hospitals in nonpatient care areas only
- Schools, classrooms, dormitories, offices
- Fire Alarm Systems
- Recreational vehicles and parks
- Marinas and boatyards
- Information Technology equipment
- Other uses per the current NEC

